



ameta
Meta**Pro**



SAFEBOX

Retail Customers: Online & Offline

amazonbasics

 stanza
living

amazon

 SMART
POINT

 dci
MARKETING

 ADISHWAR
adishwarestore.com

 BonKaso

 easyday
pados ki dukaan

 SMART
BAZAAR

 Reliance
fresh

 flipkart
.com

 Shell

 Lijelung

 JioMart

 EXTRADE®

 bigbasket

 DMart

 VISHAL
MEGA MART™



Prime **60,000 Sq Ft** Industrial Property
Adjacent to Port

- **Founded-** 2009
- **Ownership-** Privately owned
- **Location-** Chennai, India
- **Factories-** Two well-equipped
- **Products-**
 - Digital-first consumer products
 - Retail fixtures and accessories
 - E-commerce warehouse equipment
- **Market Presence-**
 - Strong domestic and export footprint

- Sound understanding of key success factors for exports
- Located on the port
- 15 years experience in exports of steel products
- All licenses for exports are available
- 140 well trained & talented team members across all functions
- Culture of Integrity, Transparency, Teamwork & Innovation

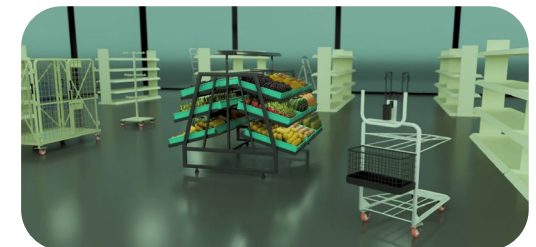
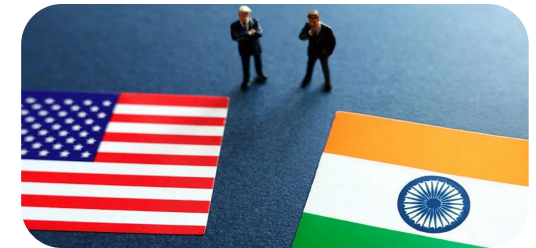


- **Strong Customer Base**

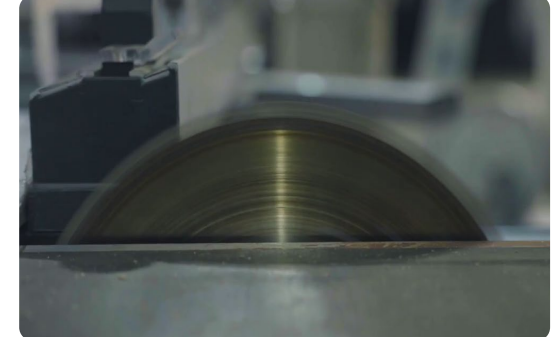
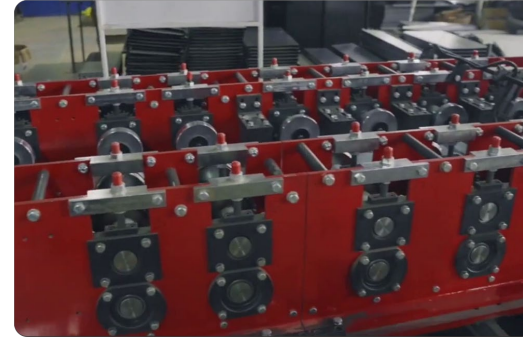
- Customers across Offline & Online retailers
- Serving top Indian retailers as a strategic supplier
- **Established as a sound China alternative for US customers**

- **End to End Capability**

- Design, Manufacture, Service & Installation
- Digital Active Consumer products
- Full Range Supermarket Fixtures
- Carts / Trolleys, Workstations

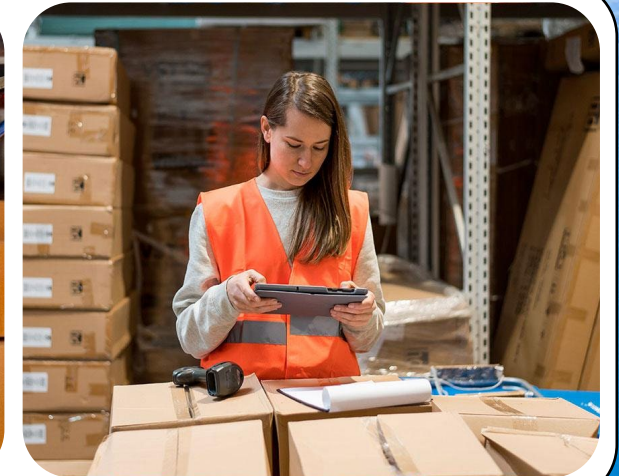


- **Full Range of Equipment, All under One Roof**
 - Roll forming
 - Tube punching
 - Power Press & dedicated tooling
 - Turret
 - Laser
 - Press brake
 - Robot welding
 - Good fabrication shop
 - Wood panel saw & auto edge banding
 - Auto spray powder coat line



Advanced Capabilities & Scalable Capacity for Rapid Growth

- Mfg. model designed for High Volume / High Mix business
- Sound understanding of digital retail nuances
- Processes aligned to deliver global quality such as Paint / Fabrication / Packaging
- Good Supplier base eco system around the units
- Sound factory processes to enable customer quality, cost & delivery
- Highly skilled, well trained & engaged team





	Models	Gross Volume	Net Volume	Outer Dimensions
1	51L	57.7L	51.6L	350X500X330
2	43L	48.5L	40.4L	350X420X330
3	39L	42.9L	39L	430X270X370
4	34L	39.2L	33.7L	330X360X330
5	33L	36.5L	32.9L	430X230X370
6	25L	28.6L	25.7L	430X180X370
7	19L	21.8L	19.7L	350X250X250

Features available for safe boxes

- **Sturdy safes, built to last**
- **Mechanical/digital/biometric lock options in various colours**
- Motorized lock options available
- 2-point lock bolt option - for enhanced safety
- LED torch light, inside the safe on opening, optional
- Divider shelf for optional 2 level storage of items
- Anchor bolts included for mounting on walls or shelves
- **Any type of branding can be added as required**
- We have a specialized QR code for each safe box which has a link with complete traceability
- Special export packaging

Colours

- Raven Black – Powder Coat 
- Misty Grey – Powder Coat 
- **Any colour can be supplied based on MOQ**

51L



Lock Type	Electronic
Colour	Black
Capacity	58 litres
Material	Carbon Steel
Special Feature	Locking Features
Mounting Type	Floor Mount
Included Components	Mounting fasteners
Item Weight	14500 Grams
Alarm	Visual

43L



Product Dimensions	33D x 35.1W x 41.9H Centimeters
Lock Type	Electronic Combination Lock, Key
Colour	Black
Capacity	43 litres
Material	Steel
Special Feature	Key Unlock
Mounting Type	Floor Mount
Control Type	Touchpad Control
Included Components	2-KEYS, 1 USER MANUAL, 1 - PARTIATION PLATE, 4- EXPANSION BOLT

39L



Product Dimensions	36.1D x 33W x 33H Centimeters
Lock Type	key, electronic
Colour	Black
Capacity	1.2 Cubic Feet
Material	Alloy Steel
Special Feature	electronic keypad locker
Mounting Type	Wall Mount
Control Type	Touchpad Control
Included Components	2-KEYS, 4 - EXPANSION BOLT, 1 USER MANUAL,1 - PARTITION PLATE

34L



Lock Type	Electronic, Key
Colour	Grey
Capacity	43 litres
Material	Carbon Steel
Mounting Type	Floor Mount, Wall Mount
Included Components	Digital Controller
Item Weight	13000 Grams
Water Resistance Level	Not Water Resistant
Chamber Depth	14 Inches

33L



25L



19L



Lock Type	Electronic
Colour	Silver
Capacity	39 litres
Material	Carbon Steel
Special Feature	Locking Key
Mounting Type	Floor Mount
Included Components	Mounting fasteners
Item Weight	11000 Grams
Alarm	Visual

Product Dimensions	31D x 31W x 41H Centimeters
Lock Type	Key
Colour	Black
Capacity	25 litres
Material	Metal
Special Feature	Combination Lock
Mounting Type	Freestanding, Tabletop
Included Components	expansion bolt , key
Item Weight	5.9 Kilograms

Lock Type	Electronic
Colour	Black
Capacity	19 litres
Material	Carbon Steel
Special Feature	Waterproof
Mounting Type	Floor Mount
Included Components	Four bolts included to mount safe to wall, floor, or shelf
Item Weight	7450 Grams
Water Resistance Level	Waterproof

Types of locks

Lock with touch enabled

Two Password Sets Available
for Enhanced Security



About this item

- Lock with a touch enabled pad
- Buzzer alarm on wrong password entry
- 2 sets of password can be set
- Even after correct entry of password, can only be opened with a (blue key)
- Separate mechanical key provided for override for usage along with blue key

Keypad Lock

Effortless Opening with
Smooth, Hassle-Free Knob



About this item

- Keypad lock
- Mechanical key for override
- Knob for smooth hassle-free opening

Types Of Locks -We can provide customized colours and models

Electronic lock LCD



Electronic lock LCD



Electronic lock fingerprint



Electronic lock motor system



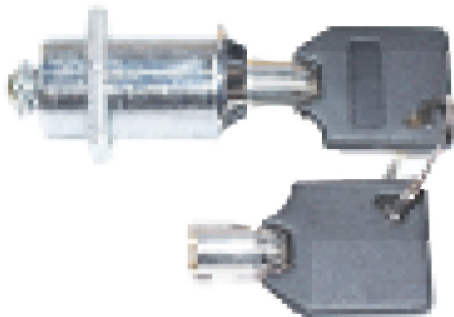
Biometric lock



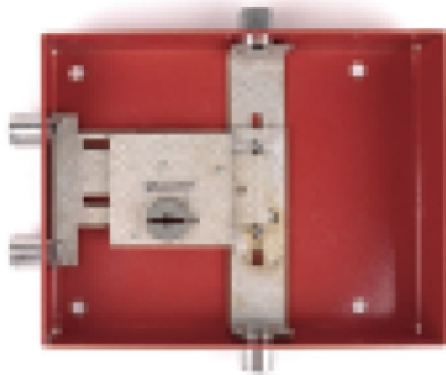
Mechanical lock
(electronic accessories)



Mechanical lock
(electronic accessories)



Mechanical lock
(Safe box)





Thank you

sales@sameta.in

arpit@sameta.in

anirban@sameta.in